



safetylink®



Anchor Catalogue



Anchor Installation Guide



Lifeline Catalogue



Lifeline Installation Guide



Ladder Catalogue



Ladder Installation Guide



PPE Catalogue



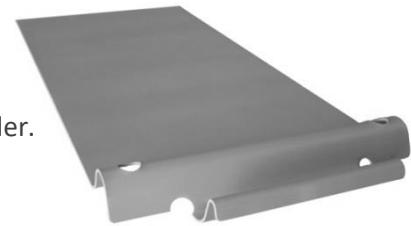
LADDERLINK
INSTALLATION
VIDEO
(TILE ROOF)



LADDERLINK
INSTALLATION
VIDEO
(METAL ROOF)

LADDERLINK

Extended Ladder Bracket | www.safetylink.com.au



- ✓ Made from marine grade aluminium.
- ✓ Essential entry point system to stabilise your ladder.
- ✓ To extend beyond box gutters and larger areas.
- ✓ 980mm gutter to end, overall length 1115mm.
- ✓ Quick and easy installation.

What am I used for?

Essential entry point system to any height safety system. Made from marine grade aluminium the LadderLink is designed to support a ladder, stopping sideways movement and therefore holding the ladder in place safely. In addition the LadderLink has securing points to tie off the ladder providing a safe access point.

POSITIONING OF SAFETYLINK ANCHOR POINTS

(refer to appendix diagrams of the Handbook)

The first must be in a position easily and safely reached by a secured ladder or a manhole access point.

- ⚠ Adjusting the pitch of the LadderLink is to be done by a sheet metal fabricators' bending machine. LadderLink is made from high tensile aluminium therefore ensure the bender is set on a high radius to prevent cracking.
- ⚠ Ladder should be only used for access. If it is intended to work from a ladder, the work should be light duty and short duration.
- ⚠ One person is to be on the ladder at any one time (except in emergency situations).
- ⚠ Three points of contact with the ladder should be maintained on the ladder at all times.
- ⚠ When going up or down a ladder you should always face the ladder.
- ⚠ Protective coating must not be removed.

COMPONENTS: PRODUCT CODE – LADFX002

PRODUCT DESCRIPTION	QUANTITY
Fixed LadderLink - Extended	1

Version 07.17

SafetyLink Pty Ltd | ABN 83 081 777 371
Phone: 1300 789545 or +61 249 641068 | Fax: 1300 738071 or +61 249 641069
info@safetylink.com.au | www.safetylink.com.au

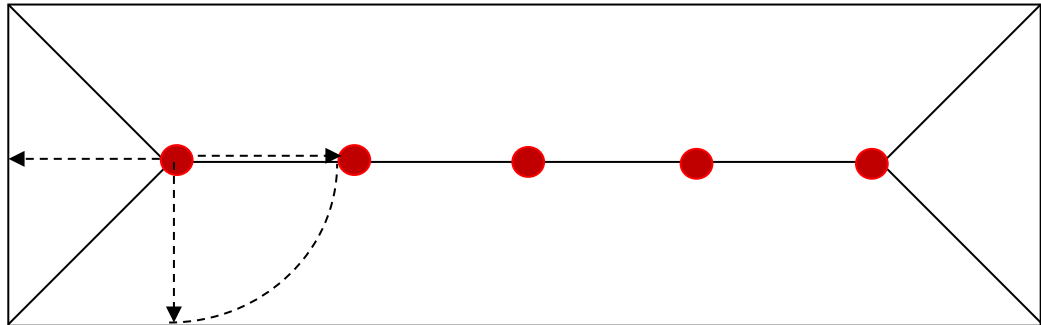
PRODUCT SHEET

POSITIONING LAYOUT

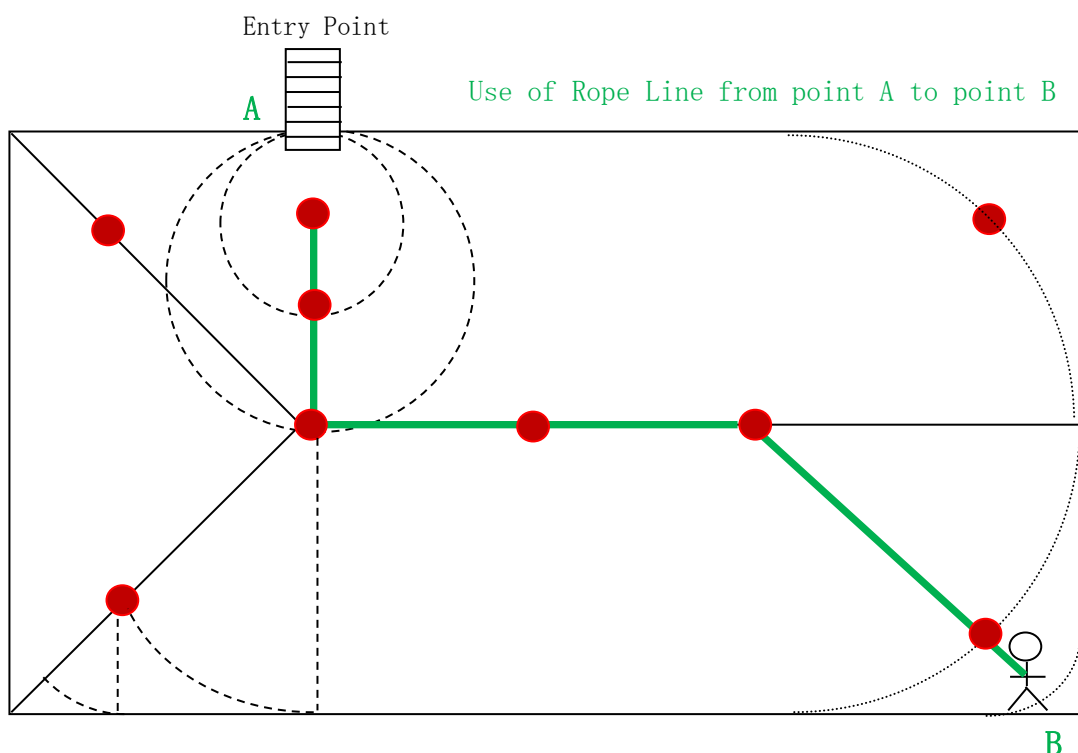
This is a guide only

All working at heights safety procedures must be complied with when installing SafetyLink anchor points. For more information refer to your state or territories current legislation, regulations, policies and codes of practices.

**SPACING MUST BE NO GREATER THAN THE RAFTER LENGTH
PLEASE CONTACT YOUR DISTRIBUTOR IF YOU ARE UNSURE**



ACCESS, LAYOUT & USE OF A SAFETYLINK ANCHOR SYSTEM
SafetyLink anchor points are positioned by calculating the pendulum effect, this limits the likelihood of a fall past the edge of the roof space.
The pendulum effect still applies to a flat roof.



SAFETYLINK HEIGHT SAFETY SYSTEMS MUST ONLY BE INSTALLED AS PER OUR INSTALLATION GUIDES, TO STRUCTURES AS SPECIFIED IN THE INSTALLATION MANUAL FOR EACH PRODUCT. SHOULD ANY DOUBT EXIST IN REGARDS TO THE STRUCTURES INTEGRITY AN ENGINEER SHOULD BE CONSULTED.

Version 07.17

SafetyLink Pty Ltd | ABN 83 081 777 371
Phone: 1300 789545 or +61 249 641068 | Fax: 1300 738071 or +61 249 641069
info@safetylink.com.au | www.safetylink.com.au

PRODUCT SHEET



Anchor
Catalogue



Anchor
Installation Guide



Lifeline
Catalogue



Lifeline
Installation Guide



Ladder
Catalogue



Ladder
Installation Guide



PPE
Catalogue



LADDERLINK
INSTALLATION
VIDEO
(TILE ROOF)



LADDERLINK
INSTALLATION
VIDEO
(METAL ROOF)

COPYRIGHT TERMS AND CONDITIONS



Anchor
Catalogue



Anchor
Installation Guide



Lifeline
Catalogue



Lifeline
Installation Guide



Ladder
Catalogue



Ladder
Installation Guide



PPE
Catalogue



LADDERLINK
INSTALLATION
VIDEO
(TILE ROOF)



LADDERLINK
INSTALLATION
VIDEO
(METAL ROOF)

Copyright in the material contained on this disc/email belongs to SafetyLink Pty Ltd. You are authorised to reproduce this material subject to the following conditions:

1. No changes to the material may be made without SafetyLink Pty Ltd's prior written consent, which consent may be withheld, granted, or granted subject to conditions in SafetyLink Pty Ltd's discretion. Change includes any alteration, addition or deletion to the material or a part of the material that you reproduce.
2. You must ensure that any material you reproduce is marked "Copyright – SafetyLink Pty Ltd 2006".
3. Where you reproduce parts only of the material that must not cause the part reproduced to be misleading in any way or omit any important safety information.
4. You indemnify SafetyLink Pty Ltd against any claim arising out of your reproduction of the material on this disc/email or any part of it.
5. SafetyLink Pty Ltd can terminate this authority to reproduce this material on 7 day's notice in writing to you at your last known business address, for any reason. You must return this disc/email to SafetyLink Pty Ltd immediately after such a termination takes effect.

If you do not accept these conditions please return the disc/email to SafetyLink Pty Ltd. Your retention of the disc/email will otherwise be evidence of your acceptance of these conditions.

Patents

SafetyLink Pty Ltd has a multitude of patents, patents pending, design applications, trademarks and copyrighted documents both lodged and issued.

Should you wish to know the progress of our intellectual property on a specific product please email us on ip@heightsafety.com.au and quote the product code.

Version 07.17